



Ceilings Information from OWA

OWAcoustic®
premium

OWAcoustic®
smart

OWA
deco®

OWAconstruct®



System S 3

Exposed grid,
demountable



OWA



System S 3

Exposed grid, demountable

OWAcoustic®
premium

Technical Data

Product line:
OWAcoustic® premium

OWAcoustic® smart
OWAdeco®
Technical Data on request.

Dimensions:

600 x 600 mm
625 x 625 mm

600 x 1200 mm
625 x 1250 mm

Widths: 300, 312,5, 400 mm
Lengths: 1200, 1250,
2000*, 2500* mm

* only conditionally demountable

Other sizes available on request. Subject to minimum quantities and surcharges. See OWAcoustic® Price list.

Thickness:

approx. 15 mm and 20 mm

Building class:

A2-s1,d0 to EN 13501-1

Edge detail:

3

Metal suspension:

All sections are zinc galvanized and exposed faces white painted. For further details and colours see OWA Price list.

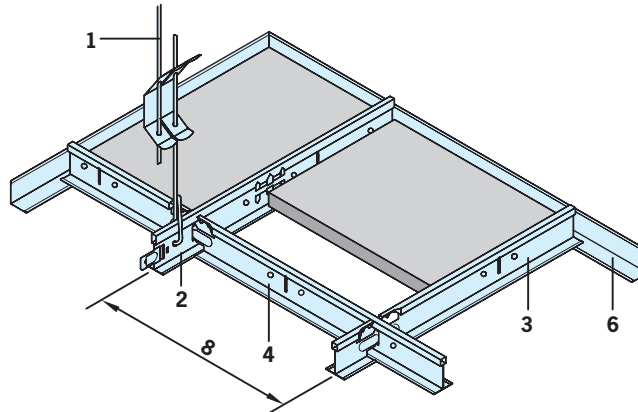
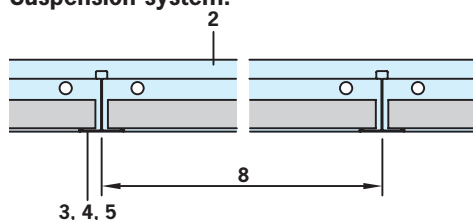
Suspension depth:

Minimum suspension depth 75 - 100 mm (from underside of soffit). For ease of panel removal 120 mm recommended.

Fire protection:

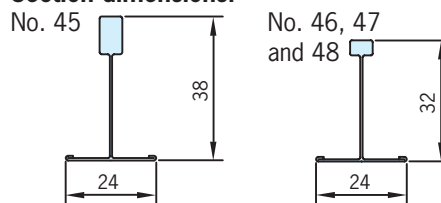
See OWA brochure No. 500

Suspension system:



- 1 Hanger No. 12/.../...
- 2 Main tee No. 45, slots at 100 or 156,25 mm centres
- 3 Cross tee No. 46
- 4 Cross tee No. 47
- 5 Cross tee No. 48
- 6 Wall angle No. 50 G
- 7 Shadow wall angle No. 56
- 8 Module distance

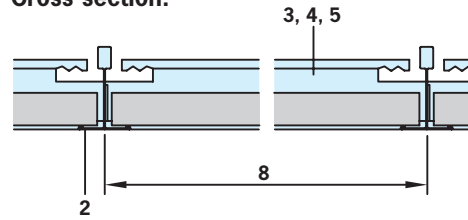
Section dimensions:



Construction:

The cross tees have connection tabs on each end, 2 cross tee sections are inserted into each slot in the main tee section but care must be taken to insert the tabs correctly so that the tees are in correct alignment. The ends of the main tee sections have offset connectors which will lock when engaged.

Cross section:



OWAcoustic®
smart

OWA
deco®

OWAconstruct®

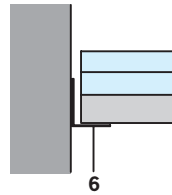
System S 3

Exposed grid, demountable

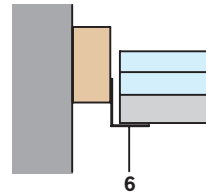


Wall perimeters:

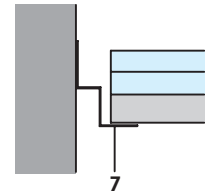
For other examples of wall perimeters and installation see OWA-Installation guide 801.



6

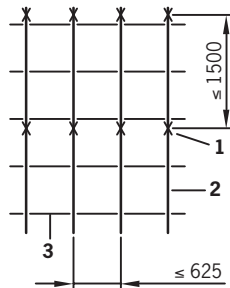


6

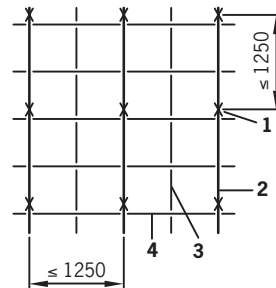


7

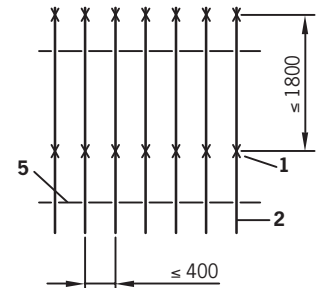
Installation examples:



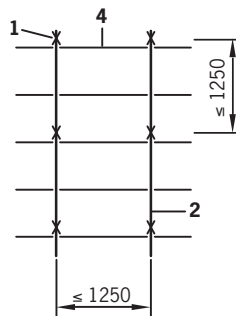
Module 625 x 625 mm



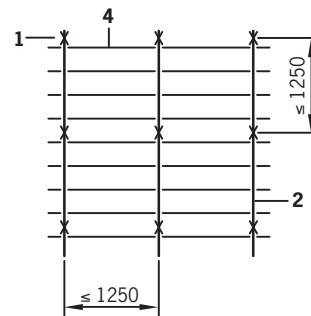
Module 600 x 600 mm



Module 400 x 2000 mm



Module 600 x 1200 mm



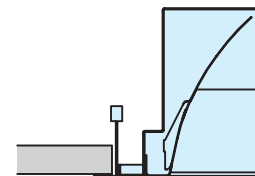
Module 300 x 1200 mm

Lighting:

OWA can supply compatible lighting fixtures for this system.

Type: OWA-Lex
OWA-Terra
OWA-Opta

Sizes: 600 x 600 mm
625 x 625 mm
312,5 x 1250 mm

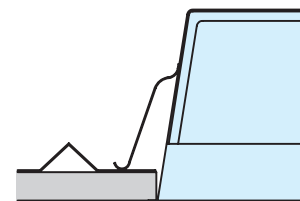


For details of radiance, installation and fire protection see OWA brochure No. 630.

Downlights:

OWA can supply suitable downlights for this system.

For details of radiance, installation and fire protection see OWA brochure No. 632.



OWAcoustic®
premium

OWAcoustic®
smart

OWA
deco®

OWAconstruct®

Material quantities per m² (Standard sizes):

No.	Description	600 x 600 mm	625 x 625 mm	625 x 625 mm*	600 x 1200 mm	625 x 1250 mm	300 x 1200 mm	312,5 x 1250 mm	400 x 2000 mm
12/.../...	Hanger	0.7 pce	0.7 pce	1.1 pcs	0.7 pce	0.7 pce	0.7 pce	0.7 pce	1.4 pcs
45	Main tee	0.83 m	0.8 m	1.6 m	0.83 m	0.8 m	0.83 m	0.83 m	2.5 m
46	Cross tee	0.83 m	0.8 m	1.6 m	—	—	—	—	—
47	Cross tee	1.66 m	1.6 m	—	1.66 m	1.6 m	3.33 m	3.2 m	—
48	Cross tee	—	—	—	—	—	—	—	0.5 m
50 G	Wall angle	Dependent on room size and shape							

* Installed with main tee centres (≤ 625 mm)

Weight:

Suspension system	1.25 kg/m ²	1.2 kg/m ²	1.22 kg/m ²	0.94 kg/m ²	0.88 kg/m ²	1.54 kg/m ²	1.48 kg/m ²	1.16 kg/m ²
Tiles 15 mm, A2-s1,d0	4.5 kg/m ²	4.5 kg/m ²	4.5 kg/m ²	4.5 kg/m ²	4.5 kg/m ²	4.5 kg/m ²	4.5 kg/m ²	4.5 kg/m ²

For special situations, for example addition of wool overlays, light fittings, cold roofs, high humidity and open areas etc., see OWA-Installation guide No. 801. For fire protecting ceilings, the distances between main tee and sections and suspension points must comply with the validated test certificates, see leaflet No. 500.

System description:

Exposed grid demountable OWAcoustic-System S 3 (Lay-in)

Quality Statement:

OWAcoustic-Mineral wool panels are free from harmful materials such as asbestos and formaldehyde. A statement from the German institute for Building Technology is available. The mineral wool used in these panels is biodegradable. The criteria of the zero-ranking as a carcinogenic material in the chemical prohibition ordinance (§ 1 appendix) section 23 bio-persistent fibres is complied with and therefore carries the "RAL-Seal of mineral wool" guarantees.

Construction description: In OWA-System leaflet S 3 and OWA-Installation guide.

Construction components:

OWAconstruct® Hanger No. 12/.../2.
OWAconstruct® Main tee No. 45.
OWAconstruct® Cross tee No. 46, 47, 48.
OWAconstruct® Wall angle No. 50 G.

Guarantee and liability

All system relevant data and statements correspond to the current technology. They assume the exclusive application of OWA products and system components, the interdependent behaviour of which is confirmed by internal and external testing. When they are used in combination with non OWA products and system components any warranties or guarantees are invalidated and liability will not be accepted. OWA reserves the right to make any technical alterations to improve either product or system development. **All goods are supplied in accordance with our general sale and delivery terms.**

OWA

Odenwald Faserplattenwerk GmbH

Dr.-F.-A.-Freundt-Straße 3

63916 Amorbach

Telefon: +49 9373 2 01-0

Telefax: +49 9373 2 01-1 30

www.owa.de · E-Mail: info@owa.de

Brochure
S 3/E
041002